

# Fleabag Music



Songs for Uke Gatherings

FIRST EDITION  
October 2003



# Fleabag Music

---

<u>Song</u>	<u>Page</u>
Aloha Oe .....	1
Hello Ma Baby .....	2
Home On The Range .....	3
Ida Sweet As Apple Cider .....	4
I've Been Working On the Railroad .....	5
In the Good Old Summertime .....	7
Red River Valley .....	8
Shine On Harvest Moon .....	9
Wait til the Sun Shines, Nellie .....	10
Won't You Come Home, Bill Bailey .....	11

The Fleabag was created through the efforts of a volunteer group of ukulele playing musicians, artists, teachers and supporters for the benefit of the entire ukulele community. Copies may be downloaded for free by visiting any one of the following sites:

- The Ukulele Hall of Fame Museum -- <http://ukulele.org>
- The 4th Peg -- <http://4thpeg.com>
- EZ Folk -- <http://www.ezfolk.com/uke/>

—  
This work was in Public Domain at the time of arranging and printing. It may be copied and distributed as long as it is not part of, or in whole, a profit generating publication.  
—

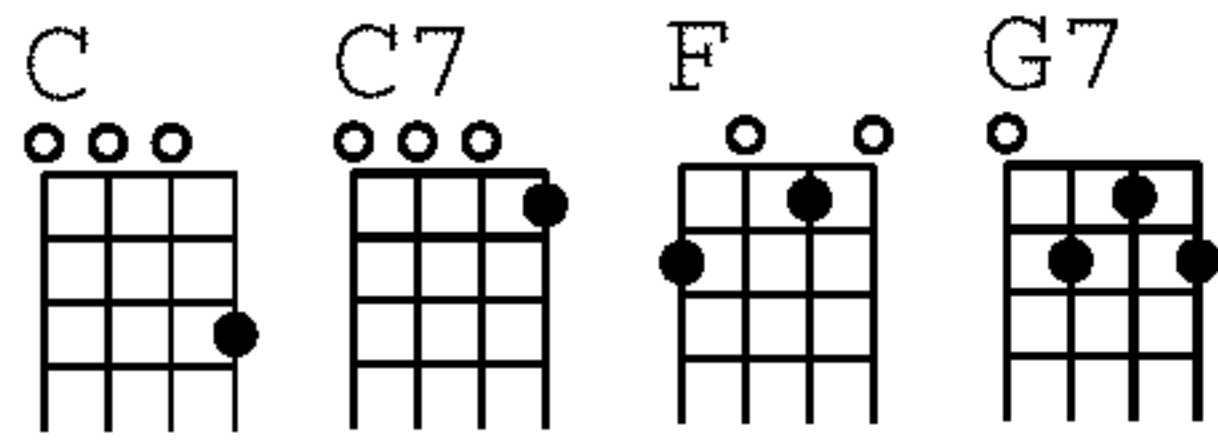
Published with support from the Ukulele Hall of Fame Museum, a non-profit organization dedicated to the preservation and promotion of ukulele history and culture. On the web at: <http://ukulele.org>.



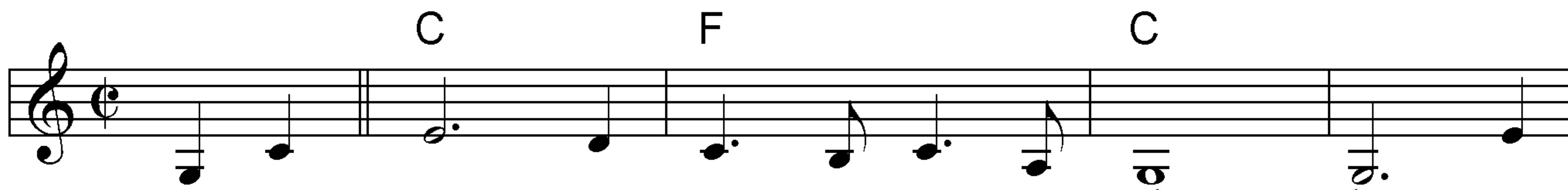
# Aloha 'Oe

Queen Lili'uokalani

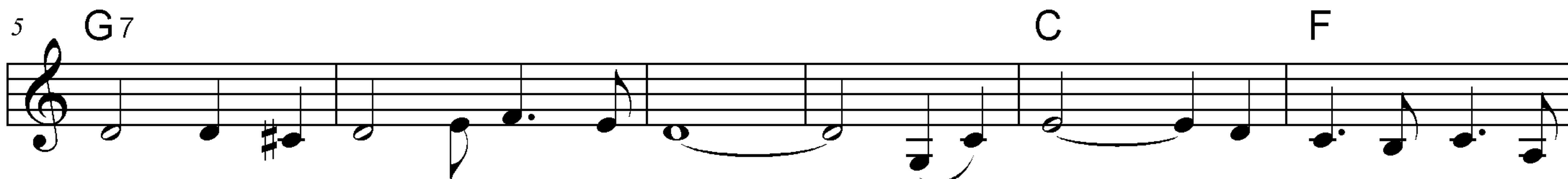
C Tuning



Ukulele



Proud - ly sweep the rain clouds by the cliffs as  
Ha - 'a - heo e\_ka - u - a i na pa - li. Ke



on - ward it glides through the trees. It seems to be fol - low - ing the  
nihi a 'ela i ka - na - hele. E u - hai ana pa - ha i ka



li - ko, the a - hi - hi le - hu - a of the vale. Fare - well to thee. Fare -  
li - ko. Pu - a a - hihi le - hu - a o u - ka. A - lo - ha 'Oe. A -



well to thee. Thou charm - ing one who dwells a - mong the bow - ers. One  
lo - ha 'Oe. E\_ke o - na o - na no - ho i - ka li - po. One



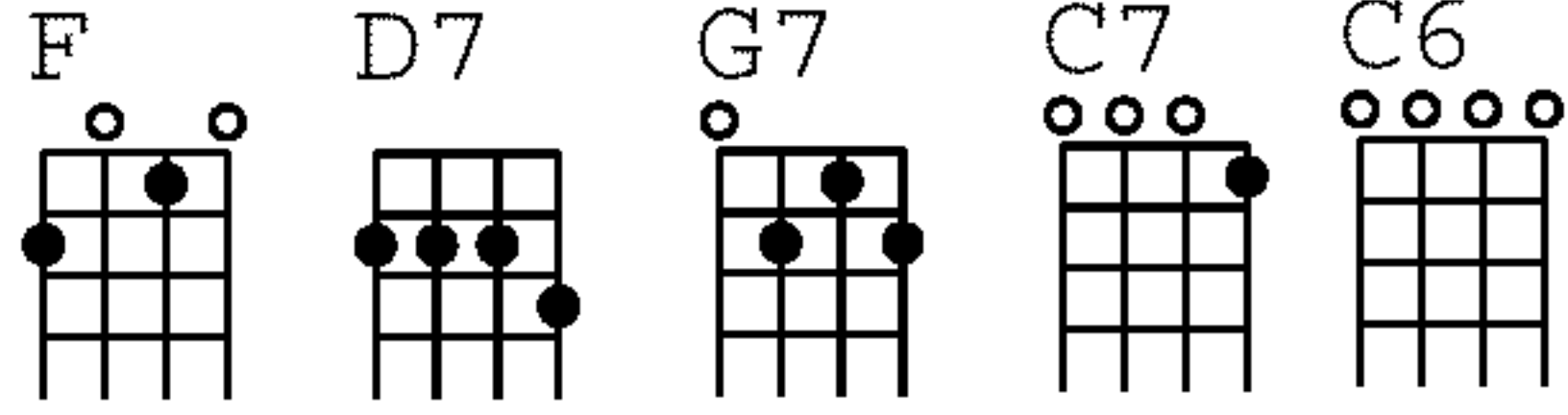
fond em - brace be - fore I now de - part, un - til we meet a - gain.  
fond em - brace, a ho'i a 'e - au un - til we meet a - gain.



# Hello! Ma Baby

Howard and Emerson

C Tuning



Ukulele

4/4

F D7 G7

Hel-lo Ma Ba-by! Hel-lo ma hon-ey. Hel-lo ma rag-time gal.

4 C6 C7 F G7 C7

Send me a kiss by wire. Ba-by my hearts on fire!

8 F D7 G7

If you re-fuse me hon-ey you'll lose me. Then you'll be left a-lone. Oh Ba-by

12 C7 F

tel-e-phone and tell me I'm your own.



# Home On The Range

Brewster Higley  
Daniel E. Kelley

C Tuning

C F G C7 G7 D7 Fm Dm7 Am

Ukulele

C C7 F Fm C

Oh give me a home where the buf - fa - lo roam. Where the deer and the  
How of - ten at night when the hea - vens are bright, by the light of the

6 D7 Dm7 G7 C C7 F

an - te - lope play. Where sel - dom is heard a dis - cour - a - ging  
shim - mer - ing stars, I've stood there a - mazed and thought as I

12 Fm C G7 C C G7

word, and the skies are not cloud - y all day.  
gazed that there glo - ry ex - ceeds that of ours. Home, home on the

19 C Am D7 Dm7 G7 C

range! Where the deer and the an - te - lope play Where sel - dom is

26 C7 F Fm C G7 C

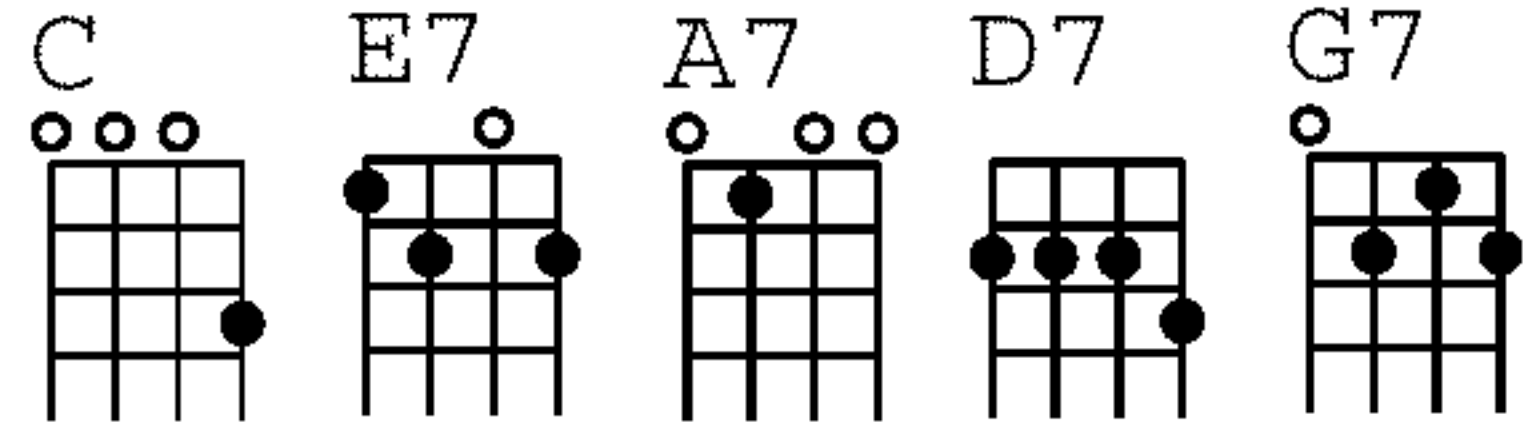
heard a dis - cour - a - ging word, and the skies are not clou - dy all day.



# Ida, Sweet As Apple Cider

Eddie Leonard  
Eddie Munson

C Tuning



Ukulele

**C** **G7**

I - da, sweet as ap - ple ci - der. Sweet - er than all I

**C** **E7** **A7** **D7**

know. Come out in the sil - vry moon - light of love we'll

**G7** **C** **G7**

whis - per so soft and low. Seems though can't live with - out you.

**C** **E7** **A7**

Lis - ten my hon - ey do. I - da I i - da -

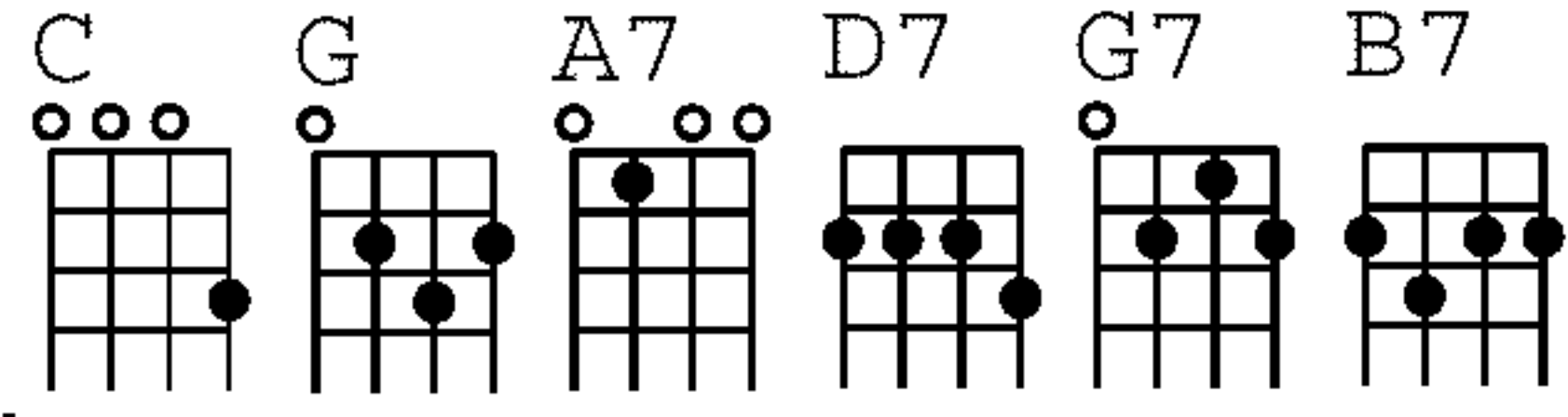
**D7** **G7** **C**

lize ya. Oh, I love you I - da 'deed I do.



# I've Been Working On the Railroad

Traditional



C Tuning

Ukulele

G G7 C G

I've been work ing on the rail road all the live long day.\_\_\_\_\_

9 A7 D7

I've been work - ing on the rail - road just to pass the time a - way.\_\_\_\_\_ Can't you

18 G C B7 C

hear the whist - le blow - ing? Rise up so ear - ly in the morn.\_\_\_\_\_ Can't you

26 G D7 G G

hear the cap - tain shout - ing, "Din - ah blow your horn!"\_\_\_\_\_ Din - ah won't you

34 C D7 G

blow? Din - ah won't you blow? Din - ah won't you blow your horn?\_\_\_\_\_

41 C D7 G

Din - ah won't you blow, Din - ah won't you blow, Din - ah won't you blow your horn?\_\_\_\_\_





G C Tuning

G G7 C D7

49

G D7

Some-one's in the kit-chen with Din - ah. Some-one's in the kit-chen I know.\_\_\_\_\_

57

G G7 C G D7 G

Some-one's in the kit-chen with Din - ah strum-ming on the old ban - jo and sing-ing

65

G D7 G

"Fee fi fid - dley I oh. Fee fi fid - dley I oh.\_\_\_\_\_ Fee

74

G7 C G D7 G

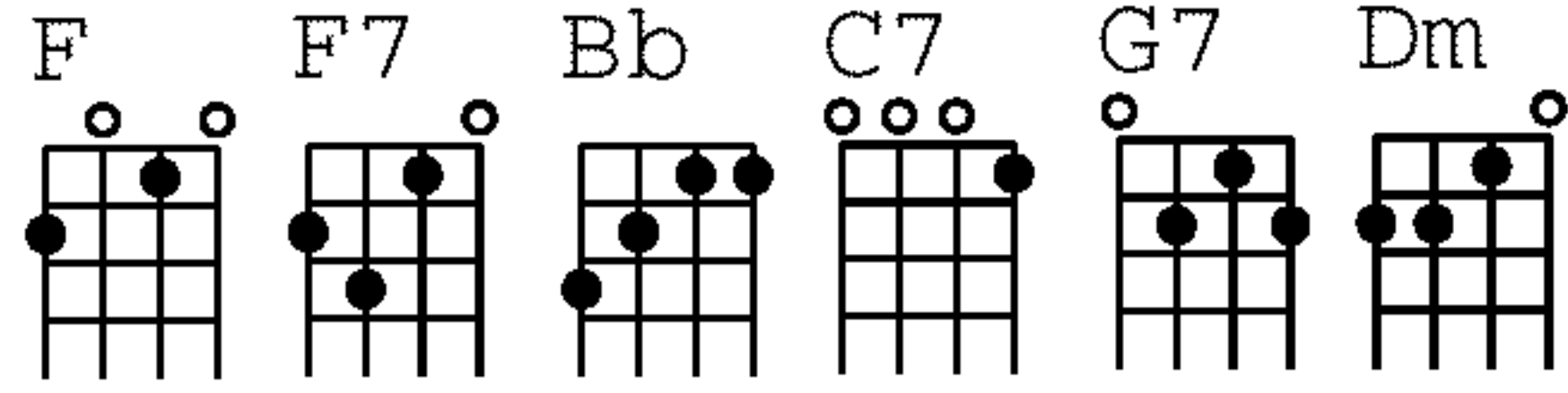
fi fid - dley I oh! Strum - ming on the old ban - jo.\_\_\_\_\_



# In the Good Old Summertime

Ren Shields  
George Evans

C Tuning



Ukulele

Chords: F, F7, Bb, F, C7

In the Good Old Sum-mer - time. In the Good Old Sum-mer - time.

9 Chords: F, Dm, G7, C7

Strol - ling down a sha dy lane with your - ba - by mine. You

17 Chords: F, F7, Bb, F, C7

hold her hand and she holds yours and that's a ver - y good sign that

25 Chords: F, Dm, G7, C7, F

she's your toot - sie woot - sie in the Good Old Sum - mer - time.



# Red River Valley

Traditional

**C Tuning**

F Bb F7 C7

Ukulele

F C7 F

From this val - ley they say you are go - ing. \_\_\_\_\_ We will  
 Come and sit by my side er' you leave me. \_\_\_\_\_ Do not

5 C7 F F7

miss your bright eyes and sweet smile. \_\_\_\_\_ For they say you are tak - ing the  
 hast - en to bid me a - dieu. \_\_\_\_\_ But re - mem - ber the Red Ri - ver

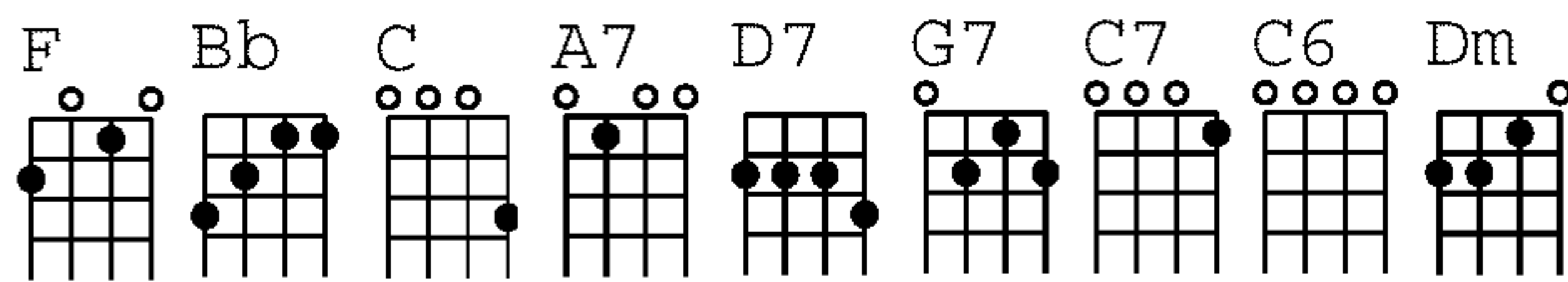
11 Bb F C7 F

sun - shine \_\_\_\_\_ that has brigh - tened our path - ways a - while. \_\_\_\_\_  
 Val - ley \_\_\_\_\_ and the one who has loved you so true. \_\_\_\_\_



# Shine On Harvest Moon

Nora Bayes  
Jack Norworth



C Tuning

Ukulele

4 The night was migh - ty dark and you could hard - ly see for the moon re - fused to

9 shine. Cou - ple sit - ting un - der - neath a wil - low tree for love they pined.

13 Lit - tle maid was kind of 'fraid of dark - ness so she said "I guess I'll go."

17 Boy be - gan to sigh. Looked up at the sky. Told the moon his lit - tle tale of woe.

23 Shine on, shine on Har - vest Moon up in the sky. I ain't had no lov - in' since

27 Jan - u - ar - y Feb - ru - ar - y June or Ju - ly. Snow time ain't no time to

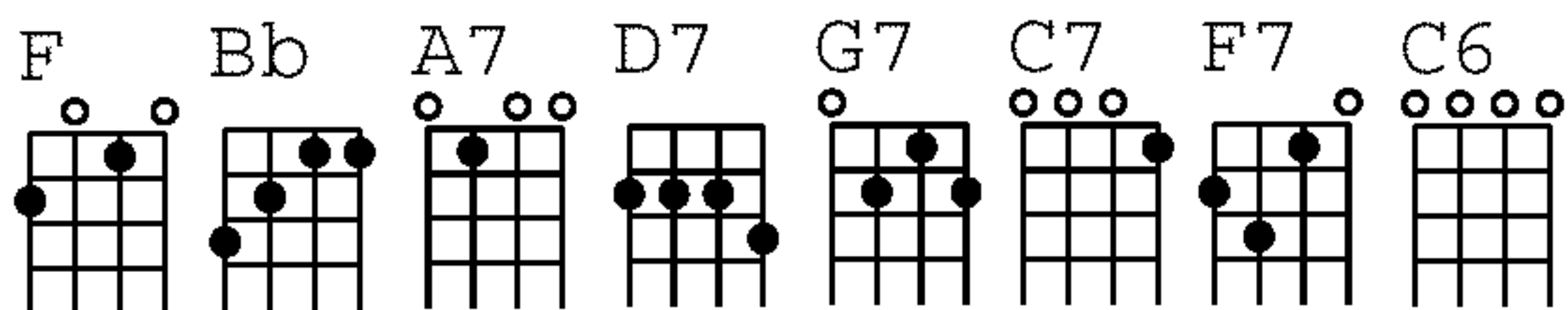
stay out - doors and spoon. So, Shine On, Shine On Har - vest Moon, for me and my gal.



# Wait 'Till the Sun Shines Nellie

Lyric Andrew B. Sterling  
Music Harry von Tilzer

C Tuning



Ukulele

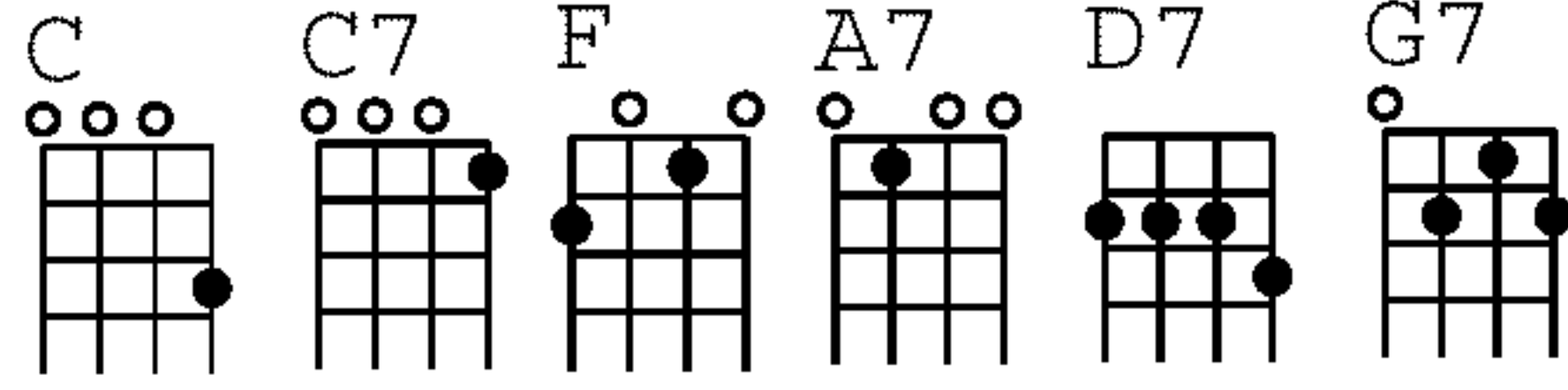
On a Sun - day morn sat a maid for - lorn with her sweet - heart by her  
 side. Through the win - dow pane she looked at the rain. "We must stay home, Joe." she  
 cried. "There's a pic - nic, too, at the old point view. It's a shame it rained to - day." Then the  
 boy drew near, kissed a - way each tear. And she heard him soft - ly say,  
 "Wait 'Til the Sun Shines, Nel - lie. And the clouds go drift - ing by. We will be  
 hap - py Nel - lie. Don't you cry. Down lov - ers lane we'll wan - der, Sweet - hearts you and  
 I. Wait 'Til the Sun Shines Nel - lie, by and by."



# Won't You Come Home Bill Bailey

Hughie Cannon

C Tuning



Ukulele

4/4

1 Won't you come home Bill Bai-ley? Won't you come home? I moaned the whole night

4 lo - ng. I'll do the cook-in hon-ey. I'll pay the rent. I know I done you wro-ng. Re-

9 mem-ber that rain - y eve-nin' I threw you out with noth-in' but a fine toothed comb? I

13 know I'm to blame. Now, ain't that a shame? Bill Bai-ley won't you please come home?